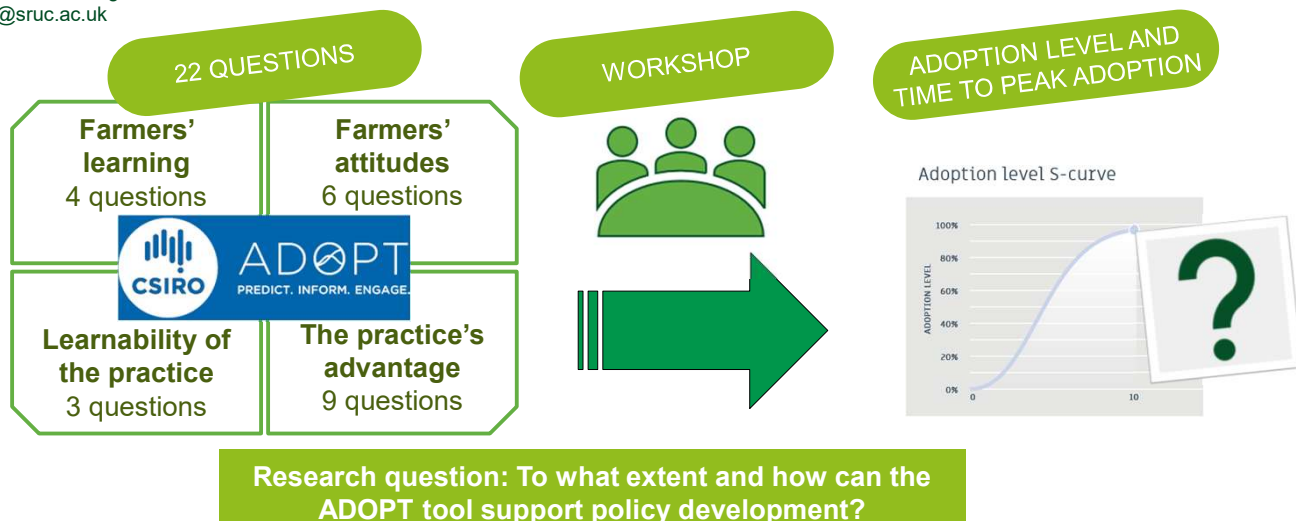


Exploring tools to estimate the future adoption of sustainable farming practices

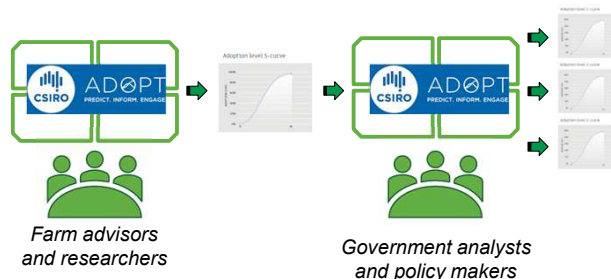
Vera Eory, Klaus Glenk, James Glendinning, Thomas Donovan
Scotland's Rural College
vera.eory@sruc.ac.uk



Background

- Estimating future behaviours is key in policy planning, yet uncertain
- Farming practice adoption work has mainly focused on farmers, often ignoring how the practice would fit with farm operations, and neglecting the role of policy and industry
- We are investigating how the ADOPT tool (<https://adopt.csiro.au/>) can be useful in policy planning and whether, and how, it can aid comparative discussions on policy interventions
- Focus on two practices of high interest to Scottish Government: cover crops and 3-NOP (methane suppressing feed additive)

Methods



2 expert workshops, 2 policy workshops
Qualitative analysis of meeting recordings

Preliminary results

Reflections on ADOPT as a discussion tool

- Helps to focus on specific circumstances of farmers
- ADOPT is useful for qualitative discussion of potential policies

Reflections on estimating uptake

- Important to know the policy and industry/market context (e.g. expectations from buyers)
- Clear definitions of the practice, the farming population and local agronomic context are essential
- Some ADOPT questions are ambiguous, introducing uncertainty

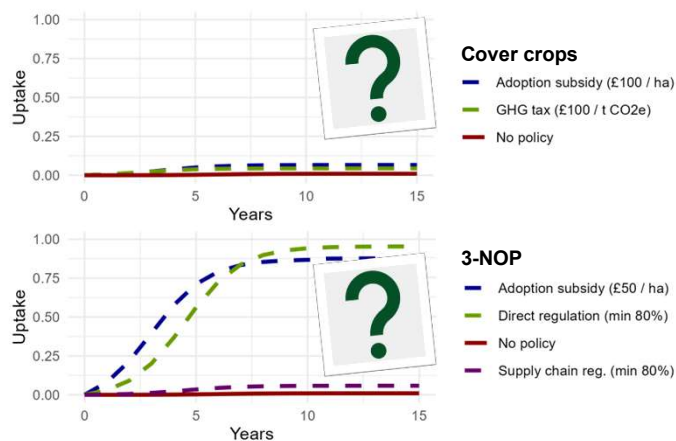
Reflections on estimating policy impact on uptake

- Aspects potentially most influenced by policy interventions: costs and risks
- Time needed for policy development is not included in model
- The specifics of support schemes are important to consider, including the levels, duration and requirements
- Estimating policy impact can be very subjective, leading to divergent results across users

Reference

Kuehne et al. 2017, Agric. Syst. 156, 115–125.

This work was supported by the Rural and Environment Science and Analytical Services Division (SRUC-B3-1, SRUC-C2-1)



Can ADOPT be useful to support policy development with...

- ... quantitative estimates of future uptake? Not really
- ... quantitative estimates of policy impacts? No
- ... understanding of barriers for the practice? Yes
- ... understanding possible policy instruments? Yes, potentially